

## DO15 RC Indoor Phase VI Test Daily Notes

*Date: July 05, 2019*

*Time: 3:00 pm*

*Cycle count: 3050*

*Overlay Bottom Temp: T1 North: 25.47°F T1 South: 27.54°F*

*Ambient Temp: 85.58°F*

### North Section Observation

- 1 crack through SG1-N-0 and SG1-N-2.5 reached top surface (Fig 1).
- 1 crack through SG6-N-0, SG6-N-2.5 and SG6-N-5 all the way to the top surface (Fig 2).
- Surface crack connected to the bottom-up crack of the outer edge (Fig 3), and the inner vertical edge (Fig 4).

### South Section Observation

- Bottom up crack through SG1-S-0 reached top surface, connected with the surface crack
- 1 crack through SG6-S-0, approximately 3 inches, no change (Fig 6).
- Surface crack reached the inner vertical edge (Fig 7), approximately 3 inches from the outer vertical edge, no change (Fig 8)

### Issues

- No



Fig 1 Bottom-up crack at north section inner vertical edge reached top surface

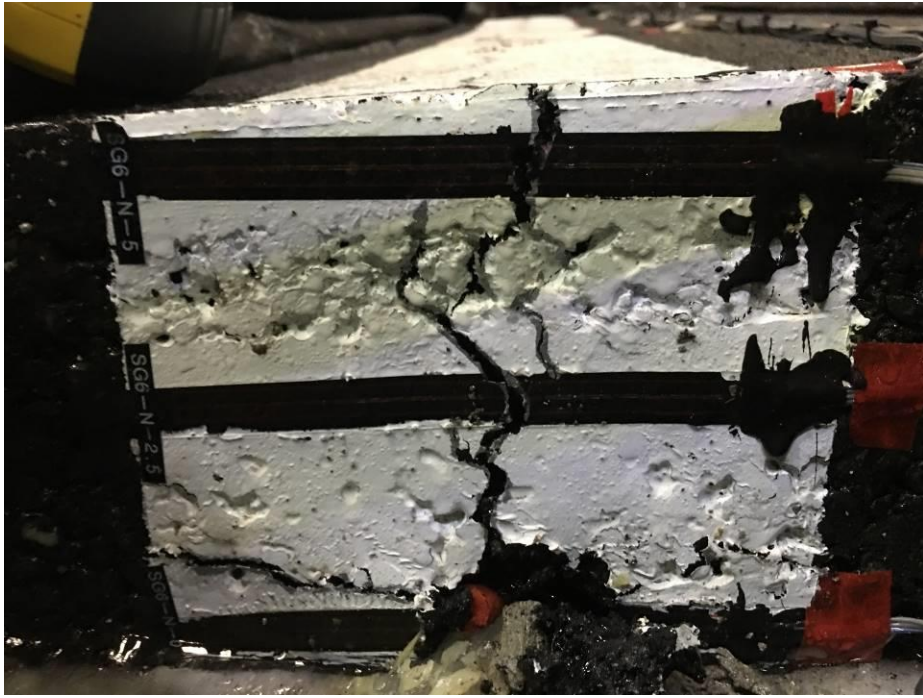


Fig 2 Bottom-up crack north outer edge reached top surface

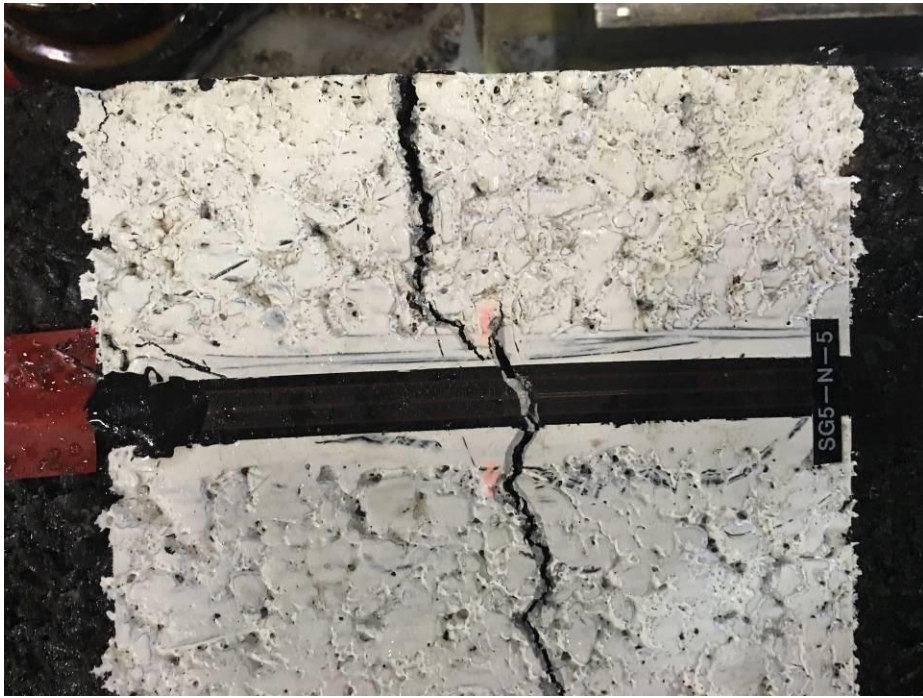


Fig 3 Surface crack on North Section reached outer edge



Fig 4 North section surface crack reached the inner vertical edge

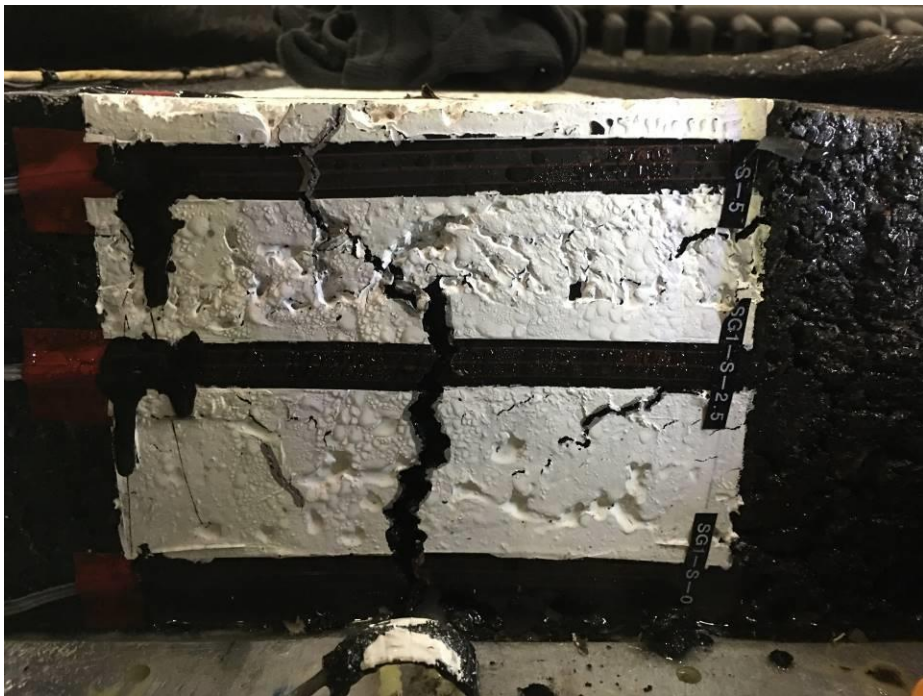


Fig 5 Bottom-up crack at inner vertical edge of south section reached top surface



Fig 6 Bottom-up crack at SG6-S-0 3 inch long

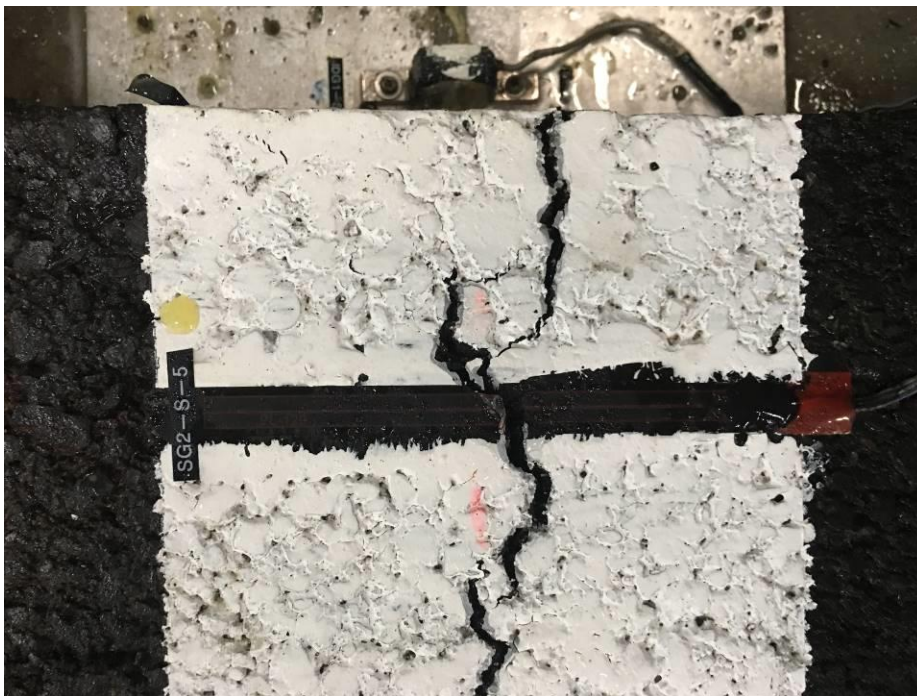


Fig 7 South section surface crack reached the inner vertical edge

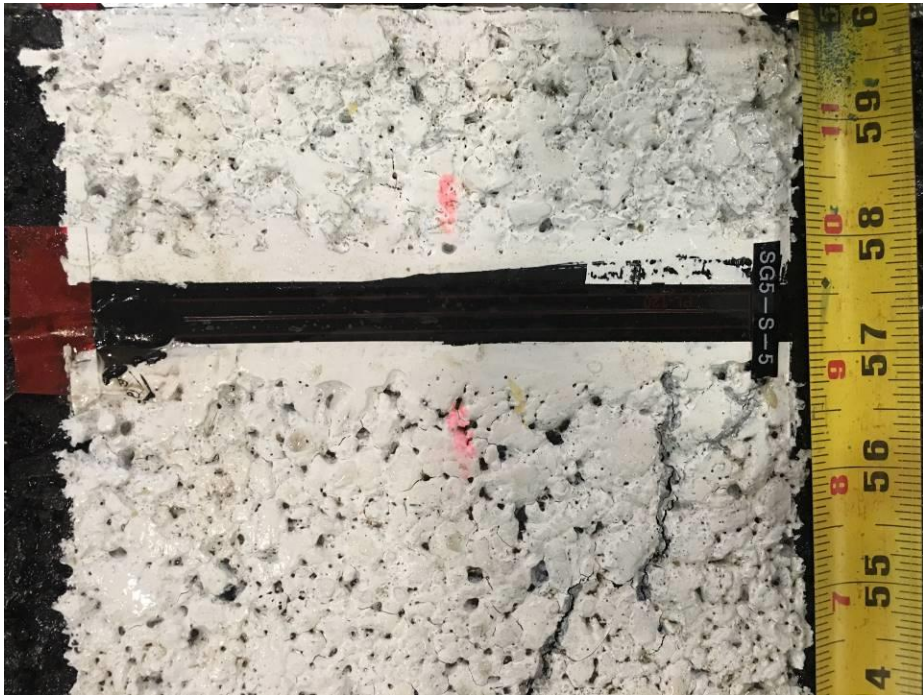


Fig 8 South section surface crack 3 inches from the outer vertical edge